

WEIDER

Overhead door closers

Weider
ARCHITECTURAL HARDWARE



***Reliable,
full hydraulic control door closers***

WEIDER

Weider
ARCHITECTURAL HARDWARE

Hydraulic over head door closers

The **Weider** Overhead door closers are designed for all interior or exterior doors. Compact design gives minimum projection thus preventing damage where doors open onto adjacent wall.

Weider 600 Series. **Weider 1500 Series.**

Weider 980 Series. **Weider 2000 Series.**

Weider 1000 Series.

Weider 1200 Series.

Weider hydraulic range conforms to most recognised international standards and complies with the requirements and/ or recommendat of the following:

BS 476/22:87

(included in fire test)

UL

ULC-Canada

CSIRC -Australia

SISIR

FRIM

-United Kingdom

-United States of America

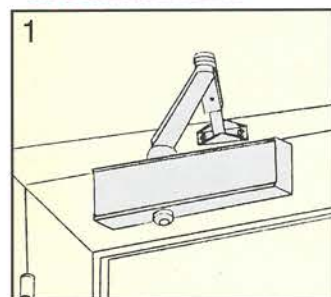
-Canada

-Australia

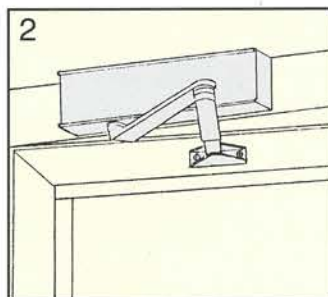
-Singapore

-Malaysia

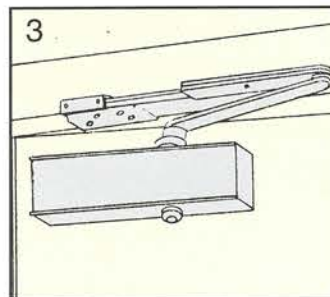
•Installations



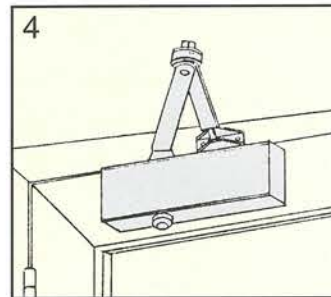
Standard Installation



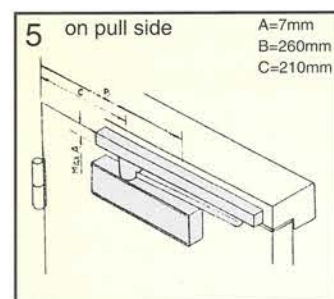
Frame Installation



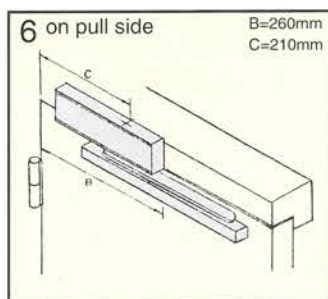
Bracket for parallel arm Installation



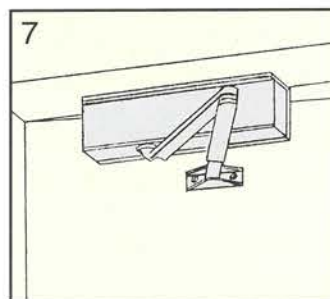
Hold-open arm Installation



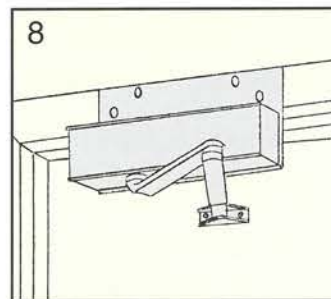
Track arm installation, Jamp mounted track(TA)



Track arm installation, door mounted track(TA)



Angle bracket installation

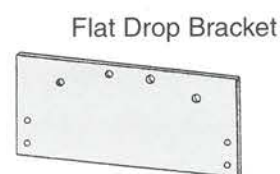


Drop plate installation

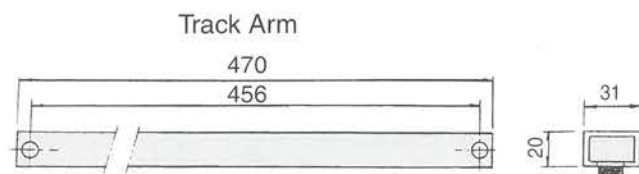
•Accessories



Art. No. 705-2



Art. No. 705-3



Art. No 705-1

GUARANTEE

The **Weider** hydraulic door closer are guaranteed for **18 mth** from date of manufacture against any defects in material or workmanship. Defective products will be replaced with a new unit; but no claims for damage incurred or work done thereon will be allowed. This guarantee is void if the product has been subjected to misapplication or abuse.

Weider Metal Inc. reserves the right to make product changes and is not responsible for obsolete template errors. To ensure your template is current, please visit our website at www.weidermetal.com or email our sales representatives.

© 2015 Weider Metal Inc. All rights reserved. WEIDER METAL AUSTRALIA. WEIDER METAL INC.



WEIDER

600 Series

Surface mounted door closers

TECHNICAL INFORMATION

•**Weider** 600 Series surface mounted

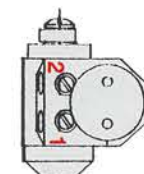
hydraulic door closers are ideally suitable for Residential and Commercial installations
Non handed Suitable for left or right hand doors

•Materials:

Die cast aluminium housing with hardened steel rack and pinion mechanism.

•Adjustment:

Independent valves control closing and latching speeds which can be readily adjusted on site when required.



- 1.-Adjustable sweep range from 180°-approx.20°
- 2.-Adjustable latch range from approx. 20°-0°

•Special Option

- A.**Built in hold open range available, but on request. Specify **HO** when ordering.
B.Built-in Backcheck function available, but on request. Specify **BC** when ordering.

•Finish:

Aluminium SIL
Bronze BZE
Gold GLD

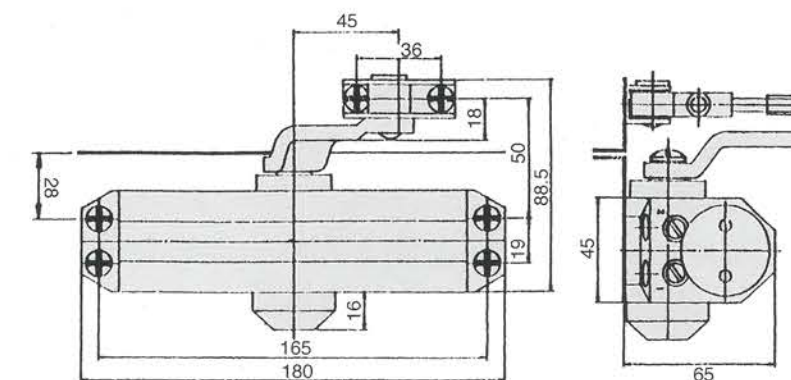
•Internatinal Standard



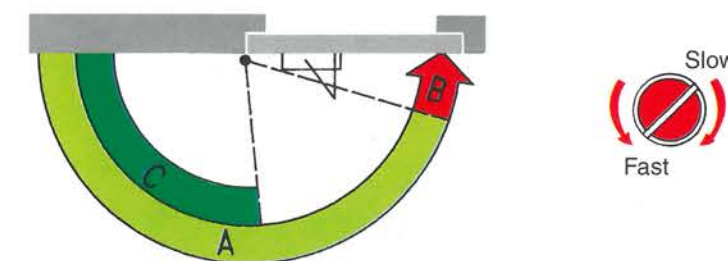
GUARANTEE

The **Weider** 600 Series hydraulic door closer are guaranteed for **18 mth** from date of manufacture against any defects in material or workmanship. Defective products will be replaced with a new unit; but no claims for damage incurred or work done thereon will be allowed. This guarantee is void if the product has been subjected to misapplication or abuse.

Regular Installation



Speed Adjustment



- A** -Adjustable sweep range from 180°-approx.20°
B -Adjustable latch range from approx. 20°-0°
C -Built-in hold open range (special option)

Closer Selection

Size No.	Closer Model	Door Weight kgs	Regular arm installation		Parallel arm	Installation
			Interior door	Exterior door	Interior door	Exterior door
2	602	25-45	900mm	800mm	800mm	700mm
3	603	40-60	1050mm	900mm	900mm	800mm



WEIDER

980 Series

Surface mounted door closers

TECHNICAL INFORMATION

•**Weider** 980 Series surface mounted hydraulic door closers, ideally suitable for industrial, commercial and residential installations. Non handed, suitable for left or right hand doors.

•**Materials:**

Quality steel internal mechanism enclosed in extruded aluminium body ,Hardened steel arms passivated for corrosion protection.

•**Adjustment:**

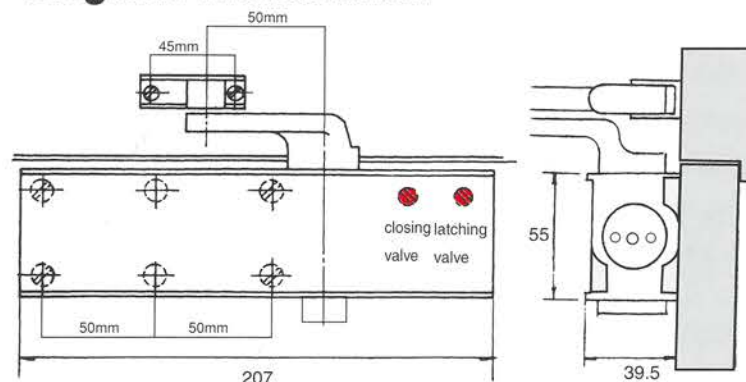
Independent valves control closing and latching speeds which can be readily adjusted on site when required.

•**Special Option**

Built-in Backcheck function available, but on request. Specify **BC** when ordering.

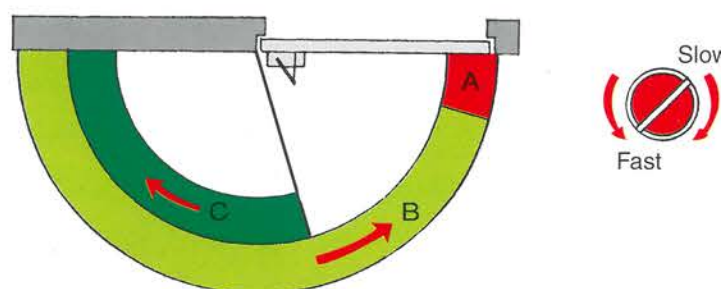
•**Finishes:** Aluminium SIL
Bronze BZE
Gold GLD

Regular Installation



- A. Closing Speed Range -Adjustable sweep range from 180°-approx.20°
- B. Latching Speed Range -Adjustable latch range from approx. 20°-0°
- C. Backcheck action range from approx.75°

Speed Adjustment



Closer Selection

size No.	closer Model	Door Weight kgs	Regular Arm installation		Parallel Arm installation	
			Interior door	Exterior door	Interior door	Exterior door
2	982	45	830mm	730mm	730mm	
3	983	60	930mm	830mm	830mm	730mm
4	984	80	1030mm	930mm	930mm	830mm

GUARANTEE

The **Weider** 980 Series hydraulic door closer are guaranteed for **18 mth** from date of manufacture against any defects in material or workmanship. Defective products will be replaced with a new unit; but no claims for damage incurred or work done thereon will be allowed. This guarantee is void if the product has been subjected to misapplication or abuse.

Weider Metal Inc. reserves the right to make product changes and is not responsible for obsolete template errors. To ensure your template is current, please visit our website at www.weidermetal.com or email our sales representatives.

© 2015 Weider Metal Inc. All rights reserved. WEIDER METAL AUSTRALIA. WEIDER METAL INC.



WEIDER

1000 Series

Surface mounted door closers

TECHNICAL INFORMATION

•**Weider** 1000 Series surface mounted hydraulic door closers, ideally suitable for industrial, commercial and residential installations. Non handed, suitable for left or right hand doors.

•**Materials:**

Quality steel internal mechanism enclosed in extruded aluminium body ,Hardened steel arms passivated for corrosion protection.

•**Adjustment:**

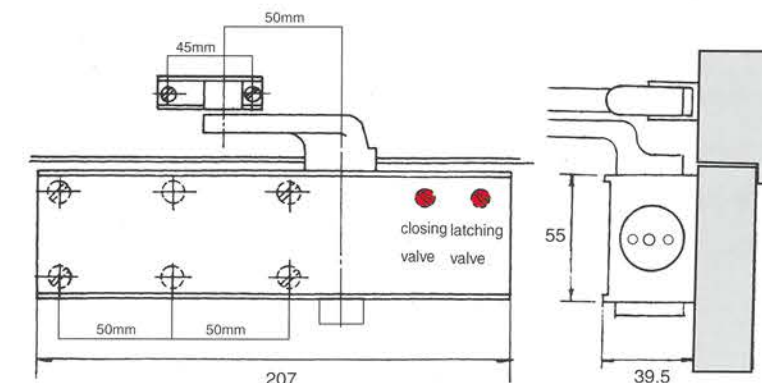
Independent valves control closing and latching speeds which can be readily adjusted on site when required.

•**Special Option**

Built-in Backcheck function available, but on request. Specify **BC** when ordering.

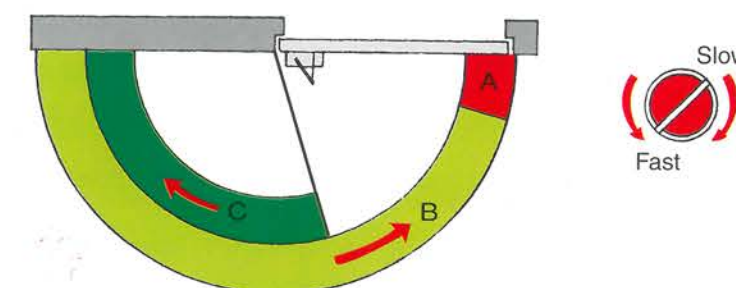
•**Finishes:** Aluminium SIL
Bronze BZE
Gold GLD

Regular Installation



- A. Closing Speed Range -Adjustable sweep range from 180°-approx.20°
- B. Latching Speed Range -Adjustable latch range from approx. 20°-0°
- C. Backcheck action range from approx.75°

Speed Adjustment



Closer Selection



size No.	closer Model	Door Weight kgs	Regular Arm installation		Parallel Arm installation	
			Interior door	Exterior door	Interior door	Exterior door
2	1020	45	830mm	730mm	730mm	
3	1030	60	930mm	830mm	830mm	730mm
4	1040	80	1030mm	930mm	930mm	830mm

GUARANTEE

The **Weider** 1000 Series hydraulic door closer are guaranteed for **18 mth** from date of manufacture against any defects in material or workmanship. Defective products will be replaced with a new unit; but no claims for damage incurred or work done thereon will be allowed. This guarantee is void if the product has been subjected to misapplication or abuse.



WEIDER

1200 Series

Fully adjustable power door closer

TECHNICAL INFORMATION

•Weider 1200 Series adjustable power surface mounted hydraulic door closers are designed primarily for outstanding versatility, ideally can be adjusted closing power suitable for light, medium and heavy duty interior or exterior doors.

•Construction

Quality steel internal mechanism enclosed in extruded aluminium body, Forged steel arms passivated for corrosion protection.

•Fully Adjustable Power 1-5:

The Weider 1200 Series adjustable power door closers, designed for closer spring power adjustable from size 1 to size 5 to suit virtually every application.

•Fully Controls:

Door closing speed, latching speed, backcheck intensity and closing power are independently adjusted to suit site conditions

•Backcheck:

Standard **Backcheck** cushions or slows the door prior to reaching final opened position. Specify **BC** when ordering.

•Delayed Action:(Special option)

Adjustable "Delayed Action" function from approx. 180° to 70° allows passage through a doorway. This option is particularly useful in hospitals, senior citizen homes and entrances to apartment complexes. Specify **DA** when ordering.

Closer Selection

size No.	closer Model	Door Weight kgs	Regular Arm installation		Parallel Arm installation	
			Interior door	Exterior door	Interior door	Exterior door
1-5	1200	150	1030mm	930mm	930mm	830mm

GUARANTEE

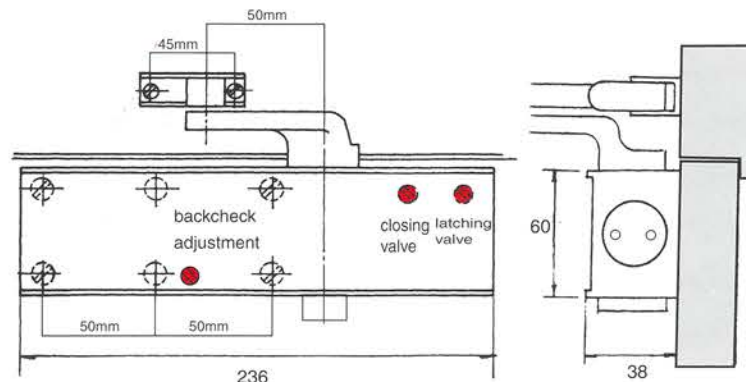
The Weider 1200 Series hydraulic door closer are guaranteed for **18 mth** from date of manufacture against any defects in material or workmanship. Defective products will be replaced with a new unit; but no claims for damage incurred or work done thereon will be allowed. This guarantee is void if the product has been subjected to misapplication or abuse.

Weider Metal Inc. reserves the right to make product changes and is not responsible for obsolete template errors. To ensure your template is current, please visit our website at www.weidermetal.com or email our sales representatives.

© 2015 Weider Metal Inc. All rights reserved. WEIDER METAL AUSTRALIA. WEIDER METAL INC.

Weider
ARCHITECTURAL HARDWARE

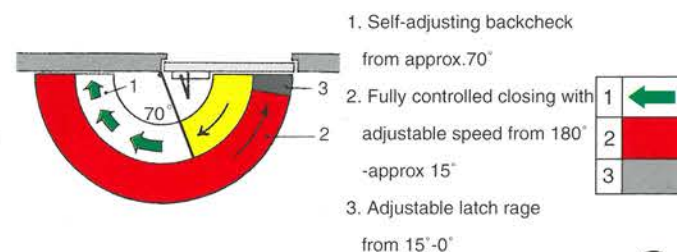
Regular Installation



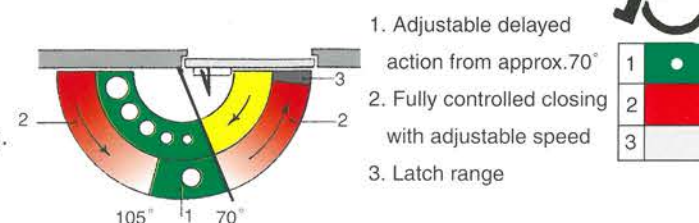
Speed Adjustment



backcheck functions



delayed action-



WEIDER

1500 Series

Fully adjustable power door closers

TECHNICAL INFORMATION

•Weider 1500 Series adjustable power surface mounted hydraulic door closers are designed primarily for outstanding versatility, ideally can be adjusted closing power suitable for light, medium and heavy duty interior or exterior doors.

•Construction

Quality steel internal mechanism enclosed in extruded aluminium body, Forged steel arms passivated for corrosion protection.

•Fully Adjustable Power 2-6:

The Weider 1500 Series adjustable power door closers, designed for closer spring power adjustable from size 2 to size 6 and to suit virtually every application.

•Fully Controls:

Door closing speed, latching speed, backcheck intensity and closing power are independently adjusted to suit site conditions.

•Backcheck:

Standard **Backcheck** cushions or slows the door prior to reaching final open position. Specify **BC** when ordering.

•Delayed Action:(Special option)

Adjustable "Delayed Action" function from approx 180° to 70° allows passage through a doorway. This option is particularly useful in hospitals, senior citizen homes and entrances to apartment complexes. Specify **DA** when ordering.

Closer Selection

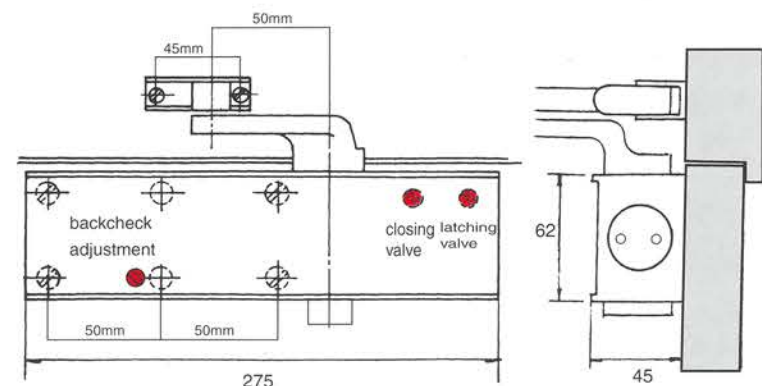
size No.	closer Model	Door Weight kgs	Regular Arm installation		Parallel Arm installation	
			Interior door	Exterior door	Interior door	Exterior door
2-6	1500	150	1330mm	1230mm	1230mm	1130mm

GUARANTEE

The Weider 1500 Series hydraulic door closer are guaranteed for **18 mth** from date of manufacture against any defects in material or workmanship. Defective products will be replaced with a new unit; but no claims for damage incurred or work done thereon will be allowed. This guarantee is void if the product has been subjected to misapplication or abuse.

Weider
ARCHITECTURAL HARDWARE

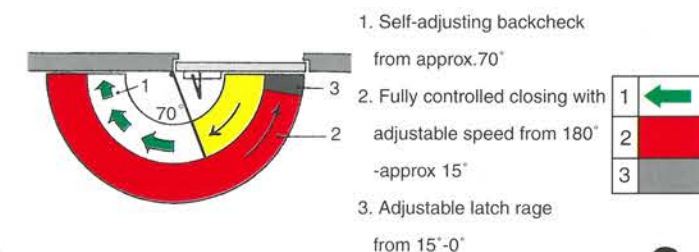
Regular Installation



Speed Adjustment



backcheck functions



delayed action-

